



ROSSI®

OWNER'S MANUAL

Rossi® R95 Lever Action



GENERAL SAFETY,
OPERATING INSTRUCTIONS
AND LIMITED WARRANTY

READ CAREFULLY BEFORE USING YOUR FIREARM

Important: Keep this manual with your firearm.

The information contained in this manual is useful, both for beginners and experienced shooters. In addition to important information about the function, cleaning and care of the firearm, this manual contains instructions that will be very helpful in shooting safely. **The most important rule of safe firearm handling is always keep the muzzle pointed in a safe direction!**

TO OUR CUSTOMERS

Congratulations on the purchase of your new Rossi firearm. Like any precision instrument, if properly cared for, your Rossi should give you a lifetime of shooting enjoyment. Please take the time to read and understand the warnings and instructions contained in this owner's manual. This manual should be kept with your firearm. Upon change of ownership, transfer this manual with the firearm.

WARNING

Never allow a minor to shoot without adult supervision. Never leave a firearm in the possession of a minor. When shooting with a child, make sure to remain close and safely supervise all activities. Always make sure to store firearms and ammunition separately.

NOTICE

It is recommended that you record the model number, serial number and date of purchase of your Rossi firearm for future reference. Be sure to retain your store receipt and any other documentation that came with your Rossi.

Model Number	
Serial Number	
Date of Purchase	

TABLE OF CONTENTS

6	Firearm Safety
8	Firearm Safety Systems
9	Get to Know your Firearm
10	Firearm Storage and Gun Locks Ammunition
13	Manual Safety
14	De-cocking Loading your Firearm
16	To Fire
17	Unloading your Firearm
18	Failure to Fire Adjusting Sights
19	Care and Maintenance Repair Instructions
20	Exploded View and Parts List
22	Parts Repair Policy

WARNING

The safety warnings in this booklet are important. By understanding the dangers inherent in the use of any firearm, and by taking the precautions described herein, you can safely enjoy your Rossi firearm. Failure to follow any of these warnings may result in serious injury to you or others, as well as severe damage to the firearm or other property.

ROSSI

ALWAYS KEEP THE MUZZLE POINTED IN A SAFE DIRECTION.

Intentionally Left Blank

NOTES

SIGNAL WORDS AS DEFINED BY ANSI Z535.6 AND Z535.4 STANDARDS.

 **DANGER**

DANGER indicates a hazardous situation which, if not avoided, will result in death or serious injury.

 **WARNING**

WARNING indicates a hazardous situation which, if not avoided, could result in death or serious injury.

 **CAUTION**

CAUTION indicates a hazardous situation which, if not avoided, could result in minor or moderate injury.

NOTICE

NOTICE is used to address practices not related to physical injury.

ROSSI

ALWAYS KEEP THE MUZZLE POINTED IN A SAFE DIRECTION.

FIREARM SAFETY

DANGER

When a firearm discharges, the bullet or shot can strike a person, resulting in death or serious bodily injury.

The three basic keys to safe handling of firearms:

1. **KEEP YOUR FINGER OFF THE TRIGGER UNTIL YOU ARE READY TO FIRE.** If you maintain good trigger discipline, it is extremely unlikely the firearm will fire.
2. **KEEP THE MUZZLE POINTED IN A SAFE DIRECTION.** Even if the firearm discharges, if the muzzle is pointed in a safe direction, no one will be injured.
3. **NEVER TRUST ANY SAFETY MECHANISM.** If you adopt the attitude that you will not trust any safety mechanism, you will be vigilant about keeping your finger off the trigger and keeping the muzzle pointed in a safe direction.

WARNING

KNOW YOUR TARGET. Never fire at targets at close range. Ricochets can and do cause death or serious bodily injury. What constitutes "close range" depends on many factors including target material, bullet caliber and angle of impact.

KNOW WHAT IS BEHIND YOUR TARGET. Unless you are shooting into a bullet trap designed to capture the type of ammunition you are firing, projectiles may pass through the target and strike anyone or anything beyond. Bullets can travel miles.

ALWAYS WEAR HEARING PROTECTION. Firearms are loud. The sound they generate is greater indoors. Repeated exposure to loud noises can cause deafness. Hearing protection is rated by decibel reduction. Look for "dB" reduction of 30 or more when purchasing ear protection. Modern ear protection can allow normal hearing until the sound from the discharge reaches the ear. Significant protection can be achieved by layering hearing protection, for example wearing 30db rated foam plugs along with 20db ear muffs.

ALWAYS WEAR EYE PROTECTION. In normal operation, firearms emit hot high-velocity gases, particles and metal. These materials flying into your eye can cause blindness. Protect your vision with proper eye protection. Any eye protection may be better than none, but look for ANSI Z87.1-2003 certified eyewear for the best protection.

SAFE CARRYING. Always carry your firearm with the hammer in the half-cocked position and the manual safety "ON".

NEVER HANDLE FIREARMS WHILE UNDER THE INFLUENCE OF DRUGS OR ALCOHOL. Firearms are dangerous. Handling firearms while impaired by drugs or alcohol is foolhardy and may result in serious injury or death. This warning includes prescription drugs that contain a warning about using machinery or driving while taking the medication.

MODIFIED FIREARMS ARE DANGEROUS, AND USE CAN RESULT IN SERIOUS INJURY OR DEATH. "Trigger jobs", polishing original components or installing aftermarket parts can cause a firearm to function in ways different than intended. Some such work may also be illegal.

DAMAGED FIREARMS ARE DANGEROUS, AND USE CAN RESULT IN SERIOUS INJURY OR DEATH. Repairs should always be made by a qualified gunsmith or by a factory-authorized repair site. Work done by those unfamiliar with the design can cause a firearm to function in ways different than intended.

NEVER ATTEMPT TO DISASSEMBLE OR CLEAN A LOADED FIREARM. DOING SO CAN RESULT IN SERIOUS BODILY INJURY OR DEATH.

How often have we heard "But it went off while I was cleaning it!" or, "I did not know it was loaded!" or, "It was jammed, and I tried to take it apart!"?

IF A FIREARM GOES OFF, THERE WAS A ROUND OF AMMUNITION IN THE CHAMBER. Period. "Clear" (or empty) the firearm of all ammunition before disassembling or cleaning.

As owner of your new Rossi firearm, you are responsible for (1) keeping your finger off the trigger, (2) pointing the muzzle in a safe direction, (3) removing ammunition from firearm, and (4) looking and feeling in the chamber to confirm the firearm is empty. An empty firearm cannot fire.

ROSSI

ALWAYS KEEP THE MUZZLE POINTED IN A SAFE DIRECTION.

FIREARM SAFETY SYSTEMS

Firearms safety is supported by a system. With your firearm the system is made up of the following:

1. **You!** Your involvement in safety cannot be overemphasized. No safety component can keep your finger off the trigger and the muzzle pointed in a safe direction. Also, you are the key to never trusting any of the mechanical parts of the safety system.

2. **Manual Safety -**

Always use the manual safety. The manual safety button is located at the rear of the receiver and must be manually pressed to the desired position. See fig 1 and fig 2.



Manual Safety ON

3. **Trigger guard -** This is a physical obstruction that helps prevent unintended pressing of the trigger. Do not modify the trigger guard.



Manual Safety OFF

4. **This Manual -** Rossi intends for you to use this manual to learn about your firearm and to help you use your firearm safety. If you use the manual, you will be a long way toward being a knowledgeable and safe firearms owner.

5. **Online Resources -** RossiUSA.com hosts a library of videos concerning safety and related issues. This library is being added to and revised. Please visit the site and take advantage of what is available there as part of your education regarding using your Rossi firearm in a safe fashion.

GET TO KNOW YOUR FIREARM

FIG 3: LOCK



CABLE LOCK

FIG 4: LEFT SIDE

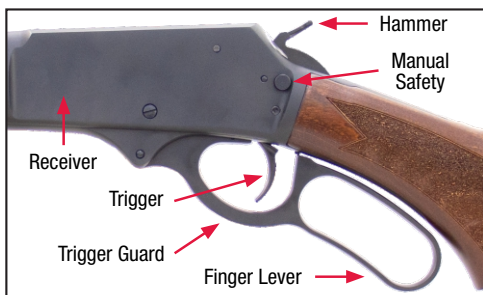


FIG 5: RIGHT SIDE

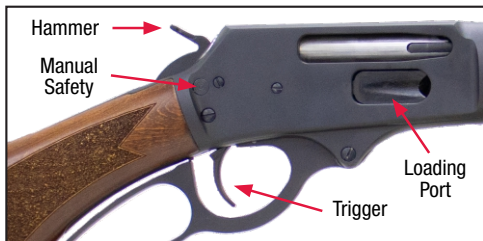


FIG 6: LOADING



ROSSI

ALWAYS KEEP THE MUZZLE POINTED IN A SAFE DIRECTION.

FIREARMS STORAGE AND GUN LOCKS

How you secure your firearms is a personal choice based on the unique circumstances in your home, business or vehicle and the laws of the state where your firearm is located. Any choice you make about securing your firearms will present advantages and disadvantages. You must weigh those advantages and disadvantages and choose which security method is best for you and those around you (see figure 3 page 9).

WARNING - LOCKING

Never lock a firearm with a round of ammunition in the chamber. Unlocking a loaded firearm makes it more difficult to maintain trigger discipline and to keep the muzzle pointed in a safe direction.

WARNING

Failure to secure a firearm may result in injury or death. Properly securing a firearm means storing your firearm unloaded, decocked and securely locked, with all ammunition in a separate location.

AMMUNITION

WARNING

Using the wrong ammunition in your firearm can result in serious bodily injury and damage to your firearm. Make certain the ammunition you load in the chamber is the same caliber as is marked on the barrel.

WARNING - POINTED AMMUNITION

Do not use hard pointed bullets. Use only soft nose or flat tip ammunition. Flexible tip bullets, 2.60" maximum length, may also be used.

**WARNING - AMMUNITION AND INDUSTRY STANDARDS**

Use only clean, dry factory-loaded ammunition. Old, damaged, wet or oily ammunition may fire at pressures higher than industry standard, causing injury to you and bystanders or damage to your firearm.

Do not use reloaded ammunition in your firearm. Its firing pressures are unknown and may well exceed industry standard, causing injury to you and bystanders or damage to your firearm.

Odd sounds are signs of trouble. If a round “does not sound right” when it goes off, stop firing right away. A bullet may be stuck in the barrel. Firing the firearm in this condition may cause pressures higher than industry standard, causing injury to you and bystanders or damage to your firearm.

If you hear any odd sounds when shooting, stop firing immediately. If there is any reason to suspect that the barrel is obstructed, immediately unload the firearm and make clear. Field strip in accordance with procedures listed in this manual. Inspect the bore for blockage with a visual inspection. It is not sufficient to merely look in the chamber. The bullet may be lodged in the barrel where it cannot be easily seen. If you do not see light when inspecting the bore, it means something is stuck in the bore. Do not shoot the firearm again, and take the firearm to a competent gunsmith or contact Rossi Service Department at 800-327-3776.

⚠ WARNING

If the bore is obstructed, DO NOT attempt to shoot it out by using another shot shell or cartridge or by blowing it out with a blank. Such techniques can generate excessive pressure, damage the firearm and cause serious injury.

ROSSI

ALWAYS KEEP THE MUZZLE POINTED IN A SAFE DIRECTION.

 **WARNING****LEAD AND HAZARDOUS CHEMICAL EXPOSURE**

Discharging firearms in poorly ventilated areas, handling, and /or cleaning firearms or handling ammunition can expose you to chemicals including lead which is known to the state of California to cause cancer and birth defects or other reproductive harm.

For more information, go to www.P65Warnings.ca.gov

Have adequate ventilation at all times. Wash hands thoroughly after exposure with soap and water.

The use of reloaded, “remanufactured”, hand-loaded, or other nonstandard ammunition voids all warranties. Improperly loaded ammunition voids all warranties. Improperly loaded ammunition can be extremely dangerous. Severe damage to the firearm and serious injury to the shooter or to others may result. Always use ammunition that complies with the industry performance standards established by the Sporting Arms and Ammunition Manufacturers Institute, Inc., of the United States (SAAMI).

MANUAL SAFETY

These firearms are manufactured with a manual safety button -
USE IT!



NOTICE

Your firearm is equipped with the safety button shown above. A manual safety is no substitute for safe, smart firearm handling.

The manual safety button is located at the rear of the receiver. To engage the manual safety, push the manual safety button from left to right so the red band is not visible.

THE MANUAL SAFETY BUTTON CAN BE PUSHED TO THE SAFE POSITION WHEN THE HAMMER IS IN THE REARMOST FULLY COCKED POSITION OR IS IN THE HALF-COCKED POSITION. Half-cocked is a position between the rest and the fully cocked positions. To reach the half-cocked position, slowly pull the hammer from its rest position until you hear a click.



Hammer on the rest position



Hammer on the half-cocked position



Hammer fully cocked

Note: when the hammer is half-cocked, the trigger is blocked and cannot be activated. This position is no substitute for the manual safety nor for safe, smart firearm handling.

ROSSI

ALWAYS KEEP THE MUZZLE POINTED IN A SAFE DIRECTION.

To disengage the manual safety, push the manual safety button from right to left. In the disengaged position, the **red** band will be visible indicating that the firearm is ready to fire.

KEEP THE MANUAL SAFETY ENGAGED IN THE SAFE POSITION UNTIL THE MUZZLE IS ON TARGET.

DE-COCKING

If you wish to safely de-cock the hammer from the fully cocked position, engage the manual safety as described above, and **keeping the muzzle pointed in a safe direction**, hold and control the hammer with your thumb, pull the trigger, then slowly and carefully let the hammer move forward a bit, then release the trigger and continue moving the hammer downward slowly until it reaches the half-cocked position.

⚠ WARNING

You should practice this method with an empty firearm until you are completely familiar and comfortable with this procedure.

LOADING YOUR FIREARM

This firearm must be loaded through the loading port located on the right side of the receiver. Note that the loading port is covered by a loading gate.

With the muzzle pointed in a safe direction, make sure that the hammer is in the rest position and the finger lever is in the closed position (action fully closed, finger lever close to the lower tang), as shown in Fig. 11. Slowly and carefully push the cartridge against the loading gate to make it open and keep pushing the cartridge until it is completely inside the receiver (Fig. 12). It is possible to load the firearm with cartridges from one up to the maximum allowed on each model.



FIG 11
Hammer in the rest position and finger lever in the closed position



FIG 12
Firearm being loaded through the loading port

If a cartridge is stuck in the chamber and you are unsure if it fired or not: Keep the muzzle pointed in a safe direction. Treat it as a live round and handle in accordance with "WHAT TO DO IF YOUR FIREARM FAILS TO FIRE" on page 18.

 **WARNING**

The danger of personal injury or death associated with cartridges, fired or unfired, becoming stuck in a firearm can be avoided by using new, clean, factory loaded ammunition and never forcing ammunition into a chamber. If you have to force ammunition into the chamber, something is wrong! Stop! And take the rifle to a qualified gunsmith.

 **WARNING - ANY GUN MAY FIRE IF DROPPED**

If dropped or struck, the firearm may fire.

 **WARNING**

If dropped or struck the firearm should be inspected by a trained gunsmith for a complete function check. After the firearm was dropped or struck, mechanisms, including automatic safeties, may not function as intended resulting in accidental death or serious injury.

ROSSI

ALWAYS KEEP THE MUZZLE POINTED IN A SAFE DIRECTION.

TO FIRE

⚠ WARNING

Always be sure the firearm is pointed at the target and away from other people, buildings and vehicles before firing. Do not fire into water. When finished shooting, immediately set the manual safety button to the safe position (red band not visible).

You can now load the chamber from the magazine. For loading instruction, read page 14, **LOADING YOUR FIREARM**.

With the safety in the ON position, cycle the finger lever forward and back. You now have a round in the chamber and the hammer is in the fully cocked position. To shoot the firearm, you must press the safety to the fire position (red band visible) and press the trigger. If you wish to continue shooting, keep the muzzle on target and push the finger lever forward to eject the now empty cartridge and pull the finger lever back to load a round from the magazine.

If you have finished your course of fire, you should keep the muzzle pointed in a safe direction, engage the safety, and put the hammer in a half-cocked position. To place the hammer in this position, hold and control the hammer with your thumb, pull the trigger, then slowly and carefully let the hammer move forward a bit, then release the trigger and continue moving the hammer downward slowly until it reaches the half-cocked position. Be aware you have a live round in the chamber. To properly unload your firearm read page 17, **UNLOADING YOUR FIREARM**.



Cycling the finger lever



Firearm loaded, cocked and ready to shoot



Manual Safety ON



Manual Safety OFF

⚠ WARNING

Keep your finger off the trigger when cycling the finger lever. Keep the manual safety in the safe position until you are on target. Failure to do so can result in accidental death or serious injury.

UNLOADING YOUR FIREARM

If you want to unload your firearm without shooting: put the hammer in the half-cocked position, set the manual safety button on (red band not visible) and then repeatedly cycle the finger lever forward and back **WITHOUT PULLING THE TRIGGER** to eject the unfired cartridges. Do this until the firearm is empty (no cartridges come out after cycling the finger lever).

This same procedure can be done if you need to check if the firearm is unloaded. Also, it is possible to look inside the loading port. If the magazine follower is visible, it means that there are no cartridges in the magazine tube.

⚠ WARNING

Always make sure the breech bolt will open in a safe direction and that the unfired cartridges will fall on a safe place. Cartridges ejecting from the chamber can cause injury. **ALWAYS INSPECT THE CHAMBER, CARRIER AND MAGAZINE CAREFULLY TO MAKE SURE THERE ARE NO CARTRIDGES LEFT IN THE FIREARM.**

ROSSI

ALWAYS KEEP THE MUZZLE POINTED IN A SAFE DIRECTION.

WHAT TO DO IF YOUR FIREARM FAILS TO FIRE

1. Misfires - If you press the trigger and the hammer falls, but the cartridge does not fire, remain in the shooting position and wait a minimum of 30 seconds. Then cycle the finger lever as previously described. This will eject the misfired cartridge from the firearm.
2. Underpowered cartridge - An underpowered cartridge is unusual if the ammunition is fresh, clean, and factory loaded. However, if you hear an unusual sound or low report, you should stop shooting immediately, keep the muzzle pointed in a safe direction and wait for a minimum of 30 seconds. Then unload the firearm and check both the chamber and bore to make sure there is no obstructions.

ADJUSTING SIGHTS

1. Check the firearm to ensure it is unloaded (see UNLOADING YOUR FIREARM on page 17) and the muzzle is pointed in a safe direction.

2. Elevation Adjustment:

To adjust elevation on the rear sight, pull the rear sight upward using one hand, and with the other hand, move the elevator forward to make the sight shorter or rearward to make the sight taller. The taller you set the rear sight, the higher the point of impact will be.



Elevation Adjustment

3. Windage Adjustment:

To make the windage adjustment, move the front sight left or right by impacting it carefully with a brass or plastic hammer. If the point of impact is left of the target, move the front sight to the right. If the point of impact is right of the target, move the front sight to the left.



Windage Adjustment

CARE AND MAINTENANCE

⚠ WARNING

Before cleaning: (1) point the muzzle in a safe direction, (2) keep your finger off the trigger, (3) push the manual safety button from left to right so the red band is not visible, (4) cycle the finger lever forward (see page 16), and (5) visually and physically inspect the chamber to ensure the firearm is unloaded and safe to perform cleaning.

A firearm must be kept clean and covered with a light film of good quality gun oil to prevent corrosion. The barrel bore should be cleaned using a cleaning rod with a clean cloth patch or a brush suitable for your rifle's caliber and left free of debris.

For exterior cleaning, rub the firearm with a lightly oiled cloth. In the same way, proceed with the bore of the barrel. Excess oil should be removed. Dust should be removed from all crevices with a small clean plastic brush.

REPAIR INSTRUCTIONS

Your firearm has been designed, engineered and manufactured in accordance with Rossi's quality control standards. However, any mechanical device may occasionally require adjustment or repair.

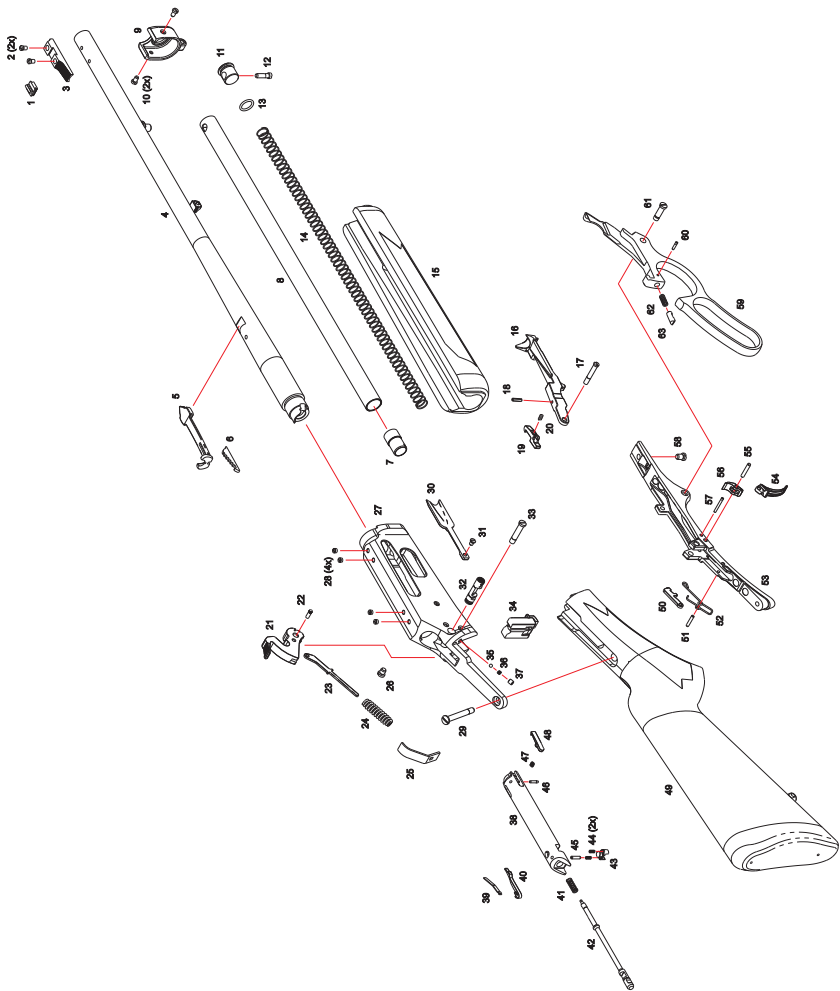
All firearms require periodic maintenance and inspection which may reveal a need for adjustment or repair. Have your firearm checked by a qualified gunsmith annually, even if it seems to be working well, since breakage, improper functioning, undue wear, or corrosion of some components may not be apparent from external examination. If you notice ANY mechanical malfunction, no NOT continue to use the firearm. UNLOAD the firearm and take it to a qualified gunsmith immediately. See repair policy on page 22.

ROSSI

ALWAYS KEEP THE MUZZLE POINTED IN A SAFE DIRECTION.

DRAWING AND PARTS LIST

This is intended as a generic guide and not a specific model or guide to assembly.



ALWAYS KEEP THE MUZZLE POINTED IN A SAFE DIRECTION.

1	Front Sight	34	Bolt Lock
2	Front Sight Screw	35	Manual Safety Ball
3	Front Sight Base	36	Manual Safety Spring
4	Barrel	37	M4X4 Screw
5	Buckhorn Rear Sight	38	Bolt
6	Rear Sight Elevator	39	Ejector Spring
7	Magazine Follower	40	Ejector
8	Magazine Tube	41	Firing Pin Spring
9	Forearm Cover	42	Firing Pin
10	Forearm Cover Screw	43	Firing Pin Lock
11	Magazine Tube Cover	44	Firing Pin Lock Spring
12	Magazine Tube Screw	45	Pin
13	Magazine Tube O'ring	46	Extractor Pin
14	Magazine Spring	47	Extractor Spring
15	Forearm	48	Extractor
16	Carrier	49	Stock
17	Carrier Screw	50	Trigger Safety
18	Pin	51	Trigger Safety Pin
19	Carrier Stop	52	Hammer Lock Spring
20	Carrier Stop Spring	53	Lower Tang
21	Hammer	54	Trigger
22	Hammer Pin	55	Trigger Pin
23	Hammer Plunger	56	Locking Hammer
24	Hammer Spring	57	Pin
25	Hammer Spring Support	58	Lower Tang Screw
26	Side Screw	59	Finger Lever
27	Receiver	60	Finger Lever Pin
28	Cap Screw	61	Finger Lever Screw
29	Upper Tang Screw	62	Friction Stud Spring
30	Loading Port Cover	63	Friction Stud
31	Loading Port Cover Screw		
32	Manual Security Button		
33	Hammer Screw		

ROSSI

ALWAYS KEEP THE MUZZLE POINTED IN A SAFE DIRECTION.

PARTS

Our Service Department maintains a full complement of replacement parts for our firearms of current manufacture. Even though most gunsmiths have the knowledge, training and ability to make the necessary repairs to your firearm, the skill and workmanship of any particular gunsmith is totally beyond our control. Should your firearm ever require service, we strongly recommend that you return it to Braztech. Follow the instructions outlined on the warranty card included with your firearm. Remember, unauthorized adjustments or parts replacement can void your warranty, it is the responsibility of the purchaser to be absolutely certain that any parts ordered from Braztech are of the correct type and are properly fitted and installed by a competent person. THIS FIREARM IS A PRECISION MECHANISM AND THE IMPROPER FITTING OF PARTS OR IMPROPER MECHANICAL ADJUSTMENT MAY RESULT IN A DANGEROUS MALFUNCTION, DAMAGE TO THE FIREARM, AND POSSIBLE SERIOUS INJURY TO THE SHOOTER OR TO OTHERS. Therefore, the purchaser and / or installer of parts must accept full responsibility for the correct adjustment and function of the firearm after such installation has been made or attempted.

ROSSI LONG GUN REPAIR POLICY

Limited Warranty

Rossi® R95

Braztech International, L.C., the exclusive importer of Rossi-brand firearms into the U.S.A., hereby provides the following **ONE-YEAR LIMITED WARRANTY** to the original purchaser of the enclosed Rossi® R95 subject to the terms and conditions set forth below.

What does the warranty cover and what is its duration?

Braztech warrants to the original purchaser that the enclosed R95 was made free of defects in material, function, and workmanship.

For one (1) year after the date of purchase, Braztech promises to remedy any defect in such material, function, or workmanship.

Further, if Braztech cannot remedy any such defects after a reasonable number of attempts within the one (1) year period, Braztech will replace the R95 with an exact or comparable model. This Warranty terminates automatically upon the transfer of the R95 to any individual or entity other than the original purchaser.

Disclaimer and Limitation of Remedy.

ANY IMPLIED WARRANTIES OF MERCHANTABILITY IMPARTED BY STATE LAW WILL BE LIMITED TO ONE (1) YEAR.

Some States do not allow limitations on how long an implied warranty lasts, so the above-limitation may not apply to you.

ANY AND ALL INCIDENTAL AND CONSEQUENTIAL DAMAGES ARE EXPRESSLY DISCLAIMED UNDER ALL CIRCUMSTANCES.

Some States do not allow the exclusion or limitation of incidental or consequential damages, so the above limitation or exclusion may not apply to you. **This ONE-YEAR LIMITED WARRANTY** gives you specific legal rights, and you may also have other rights which vary from State to State.

Braztech will not be responsible for:

- 1) Defects or malfunctions resulting from careless handling, unauthorized adjustments or modifications.
- 2) Use of defective or improper ammunition, reloaded ammunition, corrosion, neglect, abuse, ordinary wear and tear or unreasonable use.
- 3) Criminal misuse, negligence or use under the influence of drugs or alcohol.

How do you obtain warranty service?

You must contact Braztech to receive warranty service. You may contact Braztech by calling (800) 948-8029, or in writing: c/o Consumer Affairs Department, 100 Taurus Way, Bainbridge, Ga 39817. Please include a description of the claimed issue, along with your name, address, telephone number, model, serial number, proof of purchase, and date of purchase.

FIREARMS MUST BE SHIPPED UNLOADED. Double check the chamber of your firearm before shipping. If firearms are sent to Braztech in a loaded condition, we are required by law to notify the Federal authorities.

DO NOT INCLUDE AMMUNITION with your firearm. This is a violation of federal law. **DO NOT** include telescopic sights; custom grips, holsters, ammunition or other accessories with any firearm shipped to us.

Braztech is not responsible for shipment damage.

ROSSI

ALWAYS KEEP THE MUZZLE POINTED IN A SAFE DIRECTION.

A WORD TO THE WISE

Most gun accidents happen because the shooter carelessly violates the single most important rule of safe gun handling: **Always keep the muzzle pointed in a safe direction!**

Important: **Do not discard.** Keep this manual with your firearm. Upon change of ownership, transfer this manual with the firearm.



WWW.ROSSIUSA.COM

© Copyright 2017 Braztech International, L.C.
Rossi is a registered mark of Amadeo Rossi, S.A.

The information in this manual is provided as guidelines and directions for the safe use of your firearm. Braztech and/or Rossi cannot be held responsible for the misuse, illegal or negligent use of our products.

We strongly encourage all firearms owners to observe all firearms safety rules.

WARNING: This product contains chemicals known to the State of California to cause cancer, or birth defects or other reproductive harm.

Keep this and all firearms and ammunition away from unsupervised children. Firearms safety is everyone's responsibility.

Read Carefully Before Using Your Firearm